



## Our Profile

2009

 **Furniture for beautiful environments**

## Outline of Profile

- Mission Statement
- Who are we?
- Company Structure
- Total Office Management Performance System
- Support Services – Team Support
- Environment – Sustainability, Production, Packaging, Recycling
- Furniture Ranges
- Recent Projects - References
- Contacts



## **Mission Statement**

Working environments have to be dynamic. Facts and figures often overshadow the reality that people are behind them. It is just these people that Sagal Group has in mind.

Our aim is to furnish rooms and workplaces in ways that make people feel comfortable, and hence motivated to work productively.



## **Sagal Group – Who are we?**

Sagal Group is a UK owned family run business that has been established for over 25 years.

Since the early 1990s we have been developing a portfolio of Manufacturing Partnerships with furniture factories in both Europe and the UK.

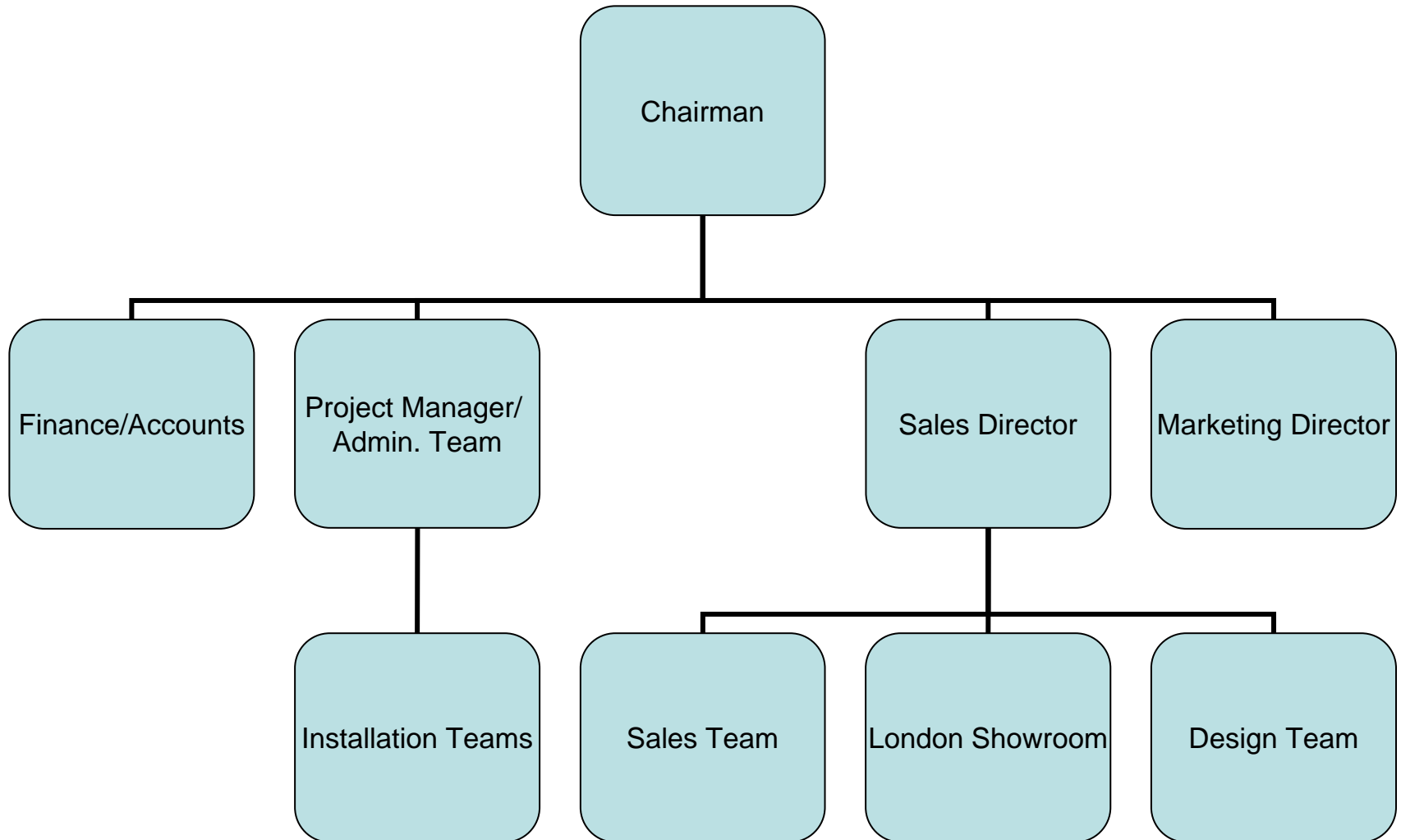
We work closely with our Partners to develop ranges of furniture that fit our clients demands in terms of Aesthetics, Function, Quality and the Environment.

Our Furniture portfolio now covers all areas of furnished environments, from Commercial Offices, Hotel, Education and Leisure projects.

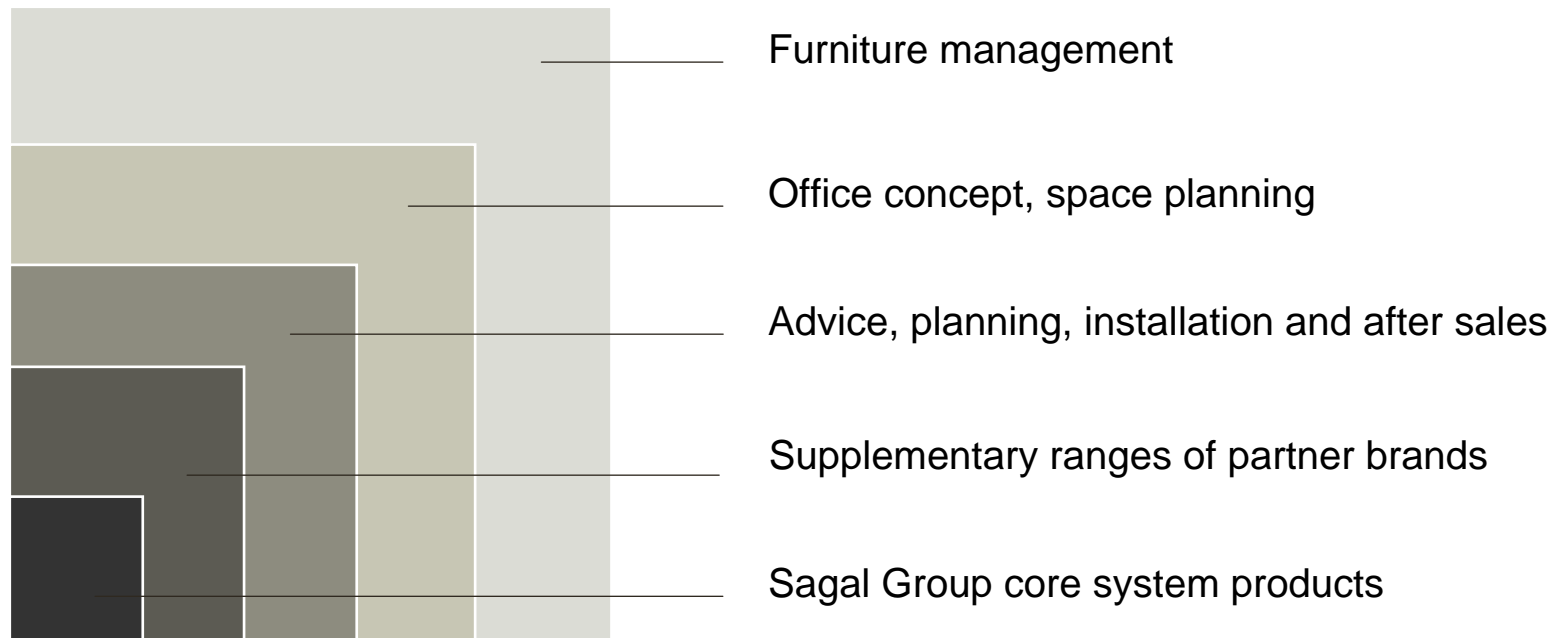
High quality products have to be supported by high quality service. We have a dedicated team of professionals in the UK to advise on all aspects of furniture specification from initial concept to installation and beyond.

Our reputation is backed by the fact that many industry professionals - Architects, Designers, Refurbishment contractors and Projects Managers – use us as their Furniture Specialists.

## Sagal Group - Company Structure



## Sagal Group – Total Office Management Performance System





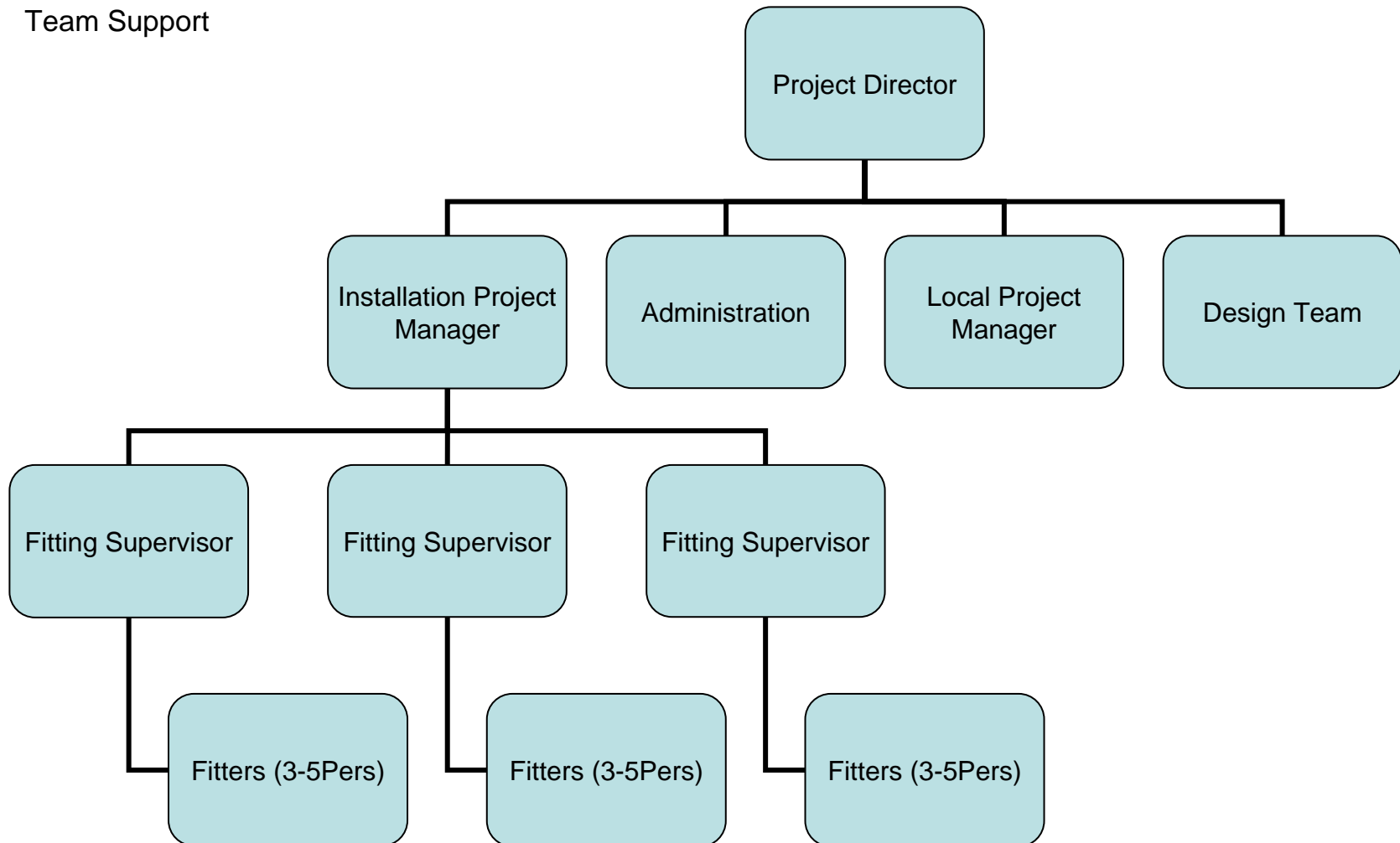
## Sagal Group - Support Services

### Team Support

1. We always appoints a Project Director to each client as a single point of contact for all needs. They take responsibility for all work carried out by Design team, Installation Project Managers and Administration team. Working from Initial Concept through Delivery & installation to After-sales.
2. A Workspace Audit is a key function of our service. Your Project Director will carry out Audits on Workstation use, Storage, Meeting, Breakout and Task Seating. We can then best advise you on the furniture system and configuration most suitable for your requirements in all areas of your business.
3. Space planning support can be carried out by one of our 'in-house' design team. All are interior design qualified and fully trained in our furniture systems so that they can offer a 'best working solution' and not just block drawings like many CAD technicians. 3D visuals are available to enhance understanding of proposals.
4. 'In time' production systems in our factories facilities ensure delivery on our non stock items can be achieved in 4-6 weeks. Transport is arranged on dedicated vehicles and met either directly at site or at our warehousing by our fully trained installation team.
5. Sagal Group has dedicated Installation Teams based in locations around the UK. We always use our teams to deliver and install our furniture thus ensuring best service to you, our customer.

## Sagal Group - Support Services

Team Support



## **Sagal Group – Environment - Sustainability**

Environmental responsibility can be clarified in one word – Sustainability.

To achieve Sustainability with regards to furniture procurement we must consider:

Environment – the impact on the world's finite resources.

Social – the impact on the furniture users of their new space

Financial – The life cycle cost of the project.

We are committed to providing our clients with Sustainable furniture ranges. Our partners investment in quality design and modern manufacturing technology allow us to supply stunning furniture at good value that is made with a view to safeguarding all our futures.

## Sagal Group – Environment – Production & Packaging

All products are manufactured to strict guidelines with special attention paid to reducing harmful waste products associated with furniture production. All new products are developed with quality and durability as priorities. To back this we offer extensive warranties against our products. Longer life spans reduce the need for replacements and reduce the life cycle cost of products.

1. Colours & Staining – Improved technology for applying ‘paint’ colour finishes by powder coating have eliminated production of VOC (Volatile Organic Compounds). We also use water based products rather than solvents.
2. Fabrics & Upholstery – There is a growing acknowledgment of a need for recycling amongst upholstery fabric manufacturers. Sagal Group representatives will be able to guide on those that conform.
3. Timber – All products are sourced from suppliers using sustainable wood supplies.
4. It is our duty to ensure all products reach our clients in perfect condition. This therefore has a bearing on how we can reduce environmental impact in this area.
5. Shrink wrapping is used in preference to cardboard. The wrap is recyclable. Using this method on pallet loaded wagons also reduces wasted space and maximises load capacities thereby reducing fuel emissions from our delivery vehicles.
6. Where possible packaging will be retained and reused. Box sizes have been standardised to allow for their use on different product ranges.

## Sagal Group – Environment - Recycling

As part of our product life cycle commitment to you our client we are happy to assist you with your furniture recycling needs.

1. Single material products. In general Steel, Aluminium and Polypropylene can be recycled 100%.
2. Mixed material products. Where possible these are designed to be disassembled before recycling. For Example on our Task Chairs:
  - The sub-seat mechanism is steel as is the gas cylinder
  - Polypropylene Seat and Back pans
  - Aluminium Arms, Bases and YolksAll of these individual components can be recycled.
3. A local solution. We will always try to recycle geographically close to you thus lessening the impact of transport on the process.

## Sagal Group – Furniture Ranges

Sagal Group offers a full portfolio of furniture ranges to suit all office working environments including:

Reception Areas – Desks and Storage, Sofas, Easy chairs and Coffee Tables

Boardroom & Meeting Rooms – Fixed and Modular tables, Audio Visual furniture, Seating and Credenzas

Workstations – Open Plan Systems and Executive Furniture

Storage – Timber carcass and Steel Carcass storage systems for all media and filing types

Task Seating – Ergonomically tested Task Seating for all areas of the office

Café/Restaurant – Loose furniture for dining facilities

Breakout – Seating and Tables for casual meeting areas

## **Sagal Group – Recent Projects**

- **National Grid** – National Office, Birmingham
- **Commercial Estates Group** – Headquarters, London
- **Aggregate Industries** – Headquarters, Leicestershire
- **Sanyo** - European Headquarters – Watford
- **Samsonite** – Worldwide Headquarters – Heathrow, London
- **Schindler Lifts** – UK Headquarters – Sunbury on Thames
- **Zurich Financial / Blueprint Ltd** - London Headquarters
- **RSM Robson Rhodes** - London
- **Weintraub Associates** – UK Headquarters – Hammersmith, London
- **Celador Productions** – London
- **Mentmore Abbey Plc** – London & Regional
- **Rubbermaid** – European Headquarters – Northampton
- **Chicago Board of Trade** – London
- **Aventis Pharmaceuticals** – Maidenhead
- **Landmark Chambers** - London

## Sagal Group – Contacts

Thank you for taking time to study this presentation. Should you have any questions please contact:

Christian Logue – Sales Director

Tel 020 7729 7377

Fax 020 7729 7344

Mob 07768 295 607

Email [chris@sagalgroup.co.uk](mailto:chris@sagalgroup.co.uk)

Sagal Group

305 Tea Building

56 Shoreditch High Street

London

E1 6JJ